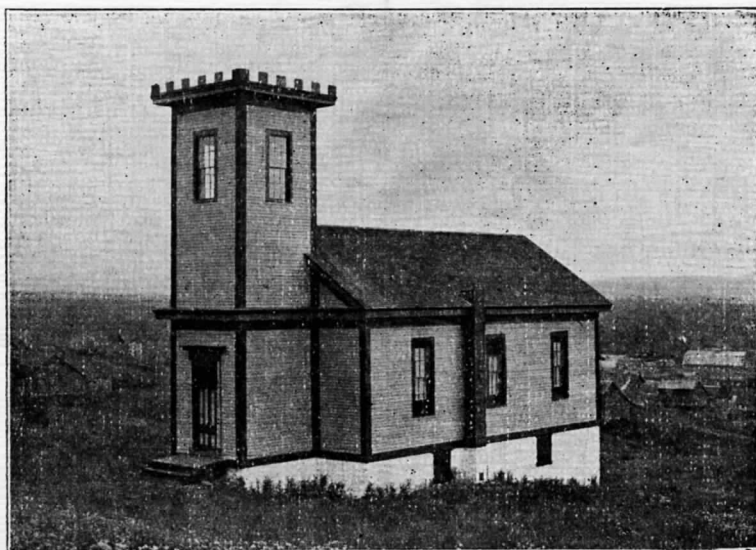


Forty-eighth Annual Reunion
CENTRAL MINE METHODIST CHURCH

Sunday, July 25, 1954 - 10:30 a. m.

DR. RALPH M. PIERCE, Ludington, Michigan



Executive Committee—George H. Roberts, Ed. C. Mitchell, Henry Cox, J. G. Bennetts, Martin J. Tretheway, Dr. Fred W. Bryant, John R. Bennetts, Earl Holman, George E. Bryant, Dr. Kenneth Nicholls, John A. Bryant.

Ministers in Charge of Central Mine Home-Coming

- | | |
|-------------------------------------|--------------------------------|
| 1907—John Kneebone | 1931—Dr. Henry R. Crane |
| 1908—Rev. William Edmunds | 1932—Rev. Gernsey F. Gorton |
| 1909—John Kneebone | 1933—Dr. Alfred R. Johns |
| 1910—Rev. John Sweet | 1934—Rev. Gernsey F. Gorton |
| 1911—Rev. Guy V. Hoard | 1935—Rev. Fred J. Clifford |
| 1912—Rev. H. V. Adams | 1936—Rev. John Thompson |
| 1913—Rev. H. V. Adams | 1937—Bishop Ernest Waldorf |
| 1914—Bishop F. D. Leete | 1938—Rev. William N. Whear |
| 1915—Rev. Frank H. Cookson | 1939—Dr. J. Newton Davies |
| 1916—Bishop Charles Bayard Mitchell | 1940—Rev. J. G. M. Stephens |
| 1917—Rev. D. C. Littlejohn | 1941—Rev. Leon T. Moore |
| 1918—Rev. S. G. Gillette | 1942—Rev. Leon T. Moore |
| 1919—Rev. Harry Felton | 1943—Rev. William Clyde Donald |
| 1920—Rev. H. Addison Leeson | 1944—Rev. Frederick C. Vosburg |
| 1921—Rev. R. R. Bryan | 1945—Rev. William Clyde Donald |
| 1922—Rev. William Dawe | 1946—Rev. Leon T. Moore |
| 1923—Rev. George E. Gullen | 1947—Rev. William N. Whear |
| 1924—Rev. C. W. Brown | 1948—Dr. William Clyde Donald |
| 1925—Rev. G. W. Olmstead | 1949—Dr. John E. Marvin |
| 1926—Rev. Sidney D. Eva | 1950—Bishop Marshall R. Reed |
| 1927—Rev. George E. Nuckalls | 1951—Dr. Glenn M. Frye |
| 1928—Rev. Frank H. Cookson | 1952—Dr. Verner S. Mumbulo |
| 1929—Dr. James Thomas | 1953—Dr. William Clyde Donald |
| 1930—Bishop Charles Edmund Locke | 1954—Dr. Ralph M. Pierce |

