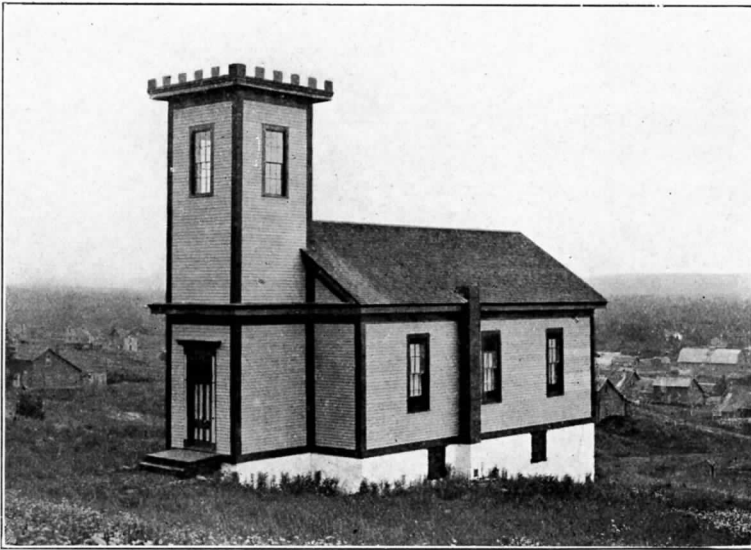


Forty-third Annual Reunion

Central Mine Methodist Church

SUNDAY, JULY 31, 1949

DR. JOHN E. MARVIN
Adrian, Michigan



Executive Committee—E. J. Hall, Wilfred N. Holman, George H. Roberts, Ed. C. Mitchell, Henry Cox, J. G. Bennetts, Martin J. Tretheway, Dr. Fred W. Bryant, John A. Bryant, John R. Bennetts, Earl Holman.

Ministers in Charge of Central Mine Home-Coming

- | | |
|-------------------------------------|----------------------------------|
| 1907—John Kneebone | 1929—Dr. James Thomas |
| 1908—Rev. William Edmunds | 1930—Bishop Charles Edmund Locke |
| 1909—John Kneebone | 1931—Dr. Henry R. Crane |
| 1910—Rev. John Sweet | 1932—Rev. Gernsey F. Gorton |
| 1911—Rev. Guy V. Hoard | 1933—Dr. Alfred R. Johns |
| 1912—Rev. H. V. Adams | 1934—Rev. Gernsey F. Gorton |
| 1913—Rev. H. V. Adams | 1935—Rev. Fred J. Clifford |
| 1914—Bishop F. D. Leete | 1936—Rev. John Thompson |
| 1915—Rev. Frank H. Cookson | 1937—Bishop Ernest Waldrof |
| 1916—Bishop Charles Bayard Mitchell | 1938—Rev. William N. Whear |
| 1917—Rev. D. C. Littlejohn | 1939—Dr. J. Newton Davies |
| 1918—Rev. S. G. Gillette | 1940—Rev. J. G. M. Stephens |
| 1919—Rev. Harry Felton | 1941—Rev. Leon T. Moore |
| 1920—Rev. H. Addison Leeson | 1942—Rev. Leon T. Moore |
| 1921—Rev. R. R. Byran | 1943—Rev. William Clyde Donald |
| 1922—Rev. William Dawe | 1944—Rev. Frederick C. Vosburg |
| 1923—Rev. George E. Gullen | 1945—Rev. William Clyde Donald |
| 1924—Rev. C. W. Brown | 1946—Rev. Leon T. Moore |
| 1925—Rev. G. W. Olmstead | 1947—Rev. William N. Whear |
| 1926—Rev. Sidney D. Eva | 1948—Dr. William Clyde Donald |
| 1927—Rev. George E. Nuckalls | 1949—Dr. John E. Marvin |
| 1928—Rev. Frank H. Cookson | |

Order of Service



CENTRAL MINE METHODIST CHURCH

JULY 31, 1949



Organ Prelude—Selected_____ Mrs. Gervin J. Ross

Hymn—"O Worship the King"

Invocation and Lord's Prayer (remain standing)

"Let All Together Praise Our God" _____ Bach

"The Lamb" _____ Nathaniel Dett
MATINEE MUSICALE CHORUS

Responsive Reading—Psalm 19

Gloria Patri

Scripture Reading and Prayer_____Dr. John E. Marvin

"Fairest Lord Jesus" _____
MATINEE MUSICALE CHORUS

Offering and Announcements

Solo—"The Penitent"_____Van Dewater
MRS. ROSAMONDE MITCHELL COLE

Sermon _____Dr. John E. Marvin

Hymn—"God Be With You Till We Meet Again"

Benediction

Postlude—Selected_____Mrs. Gervin J. Ross

Responsive Reading

PSALM 19

1. The heavens declare the glory of God; and the firmament sheweth his handywork.

2. Day unto day uttereth speech, and night unto night sheweth knowledge.

3. There is no speech nor language, where their voice is not heard.

4. Their line is gone out through all the earth, and their words to the end of the world. In them hath he set a tabernacle for the sun.

5. Which is as a bridegroom coming out of his chamber, and rejoiceth as a strong man to run a race.

6. His going forth is from the end of the heaven, and his circuit unto the end of it: and there is nothing hid from the heat thereof.

7. The law of the LORD is perfect, converting the soul: the testimony of the LORD is sure, making wise the simple.

8. The statutes of the LORD are right, rejoicing the heart: the commandment of the LORD is pure, enlightening the eyes.

9. The fear of the LORD is clean, enduring for ever: the judgments of the LORD are true and righteous altogether.

10. More to be desired are they than gold, yea, than much fine gold: sweeter also than honey and the honeycomb.

11. Moreover by them is thy servant warned: and in keeping of them there is great reward.

12. Who can understand his errors? Cleanse thou me from secret faults.

13. Keep back thy servant also from presumptuous sins; let them not have dominion over me: then shall I be upright, and I shall be innocent from the great transgression.

14. Let the words of my mouth, and the meditation of my heart, be acceptable in thy sight, O LORD, my strength, and my redeemer.

FIRST HYMN

1. O worship the king all glorious above
And gratefully sing his wonderful love;
Our Shield and Defender, the Ancient of days,
Pavilioned in splendor, and girded with praise.
2. O tell of his might and sing of his grace,
Whose robe is the light, whose canopy space;
His chariots of wrath the deep thunderclouds form,
And dark is his path on the wings of the storm.
3. Thy bountiful care what tongue can recite?
It breathes in the air, it shines in the light,
It streams from the hills, it descends to the plain,
And sweetly distills in the dew and the rain.
4. Frail children of dust, and feeble as frail,
In thee do we trust, nor find thee to fail;
Thy mercies how tender! how firm to the end!
Our Maker, Defender, Redeemer, and Friend.—Amen.

LAST HYMN

1. God be with you till we meet again!
By His counsels guide, uphold you;
With His sheep securely fold you;
God be with you till we meet again!
 2. God be with you till we meet again!
'Neath His wings securely hide you,
Daily manna still provide you;
God be with you till we meet again!
- Refrain**
- Till we meet! Till we meet!
Till we meet at Jesus' feet;
Till we meet! Till we meet!
God be with you till we meet again!
3. God be with you till we meet again!
When life's perils thick confound you,
Put His arms unfailling round you;
God be with you till we meet again!
—Amen.

MATINEE MUSICALE CHORUS

Calumet, Michigan

MISSES

Betty Grindatti
Mary Kowacie
Marjorie Grierson
Marilyn Pearce
Joan McLeod
Annabel MacNaughton
Eva Kivela
Patsy Patsloff
Mollie Ulseth

MESDAMES

Kenneth Stenson
Kenneth Gillies
A. W. Payne
William F. Olds
Fred Pearce
Donovan Wickliffe
James E. Breth, Director